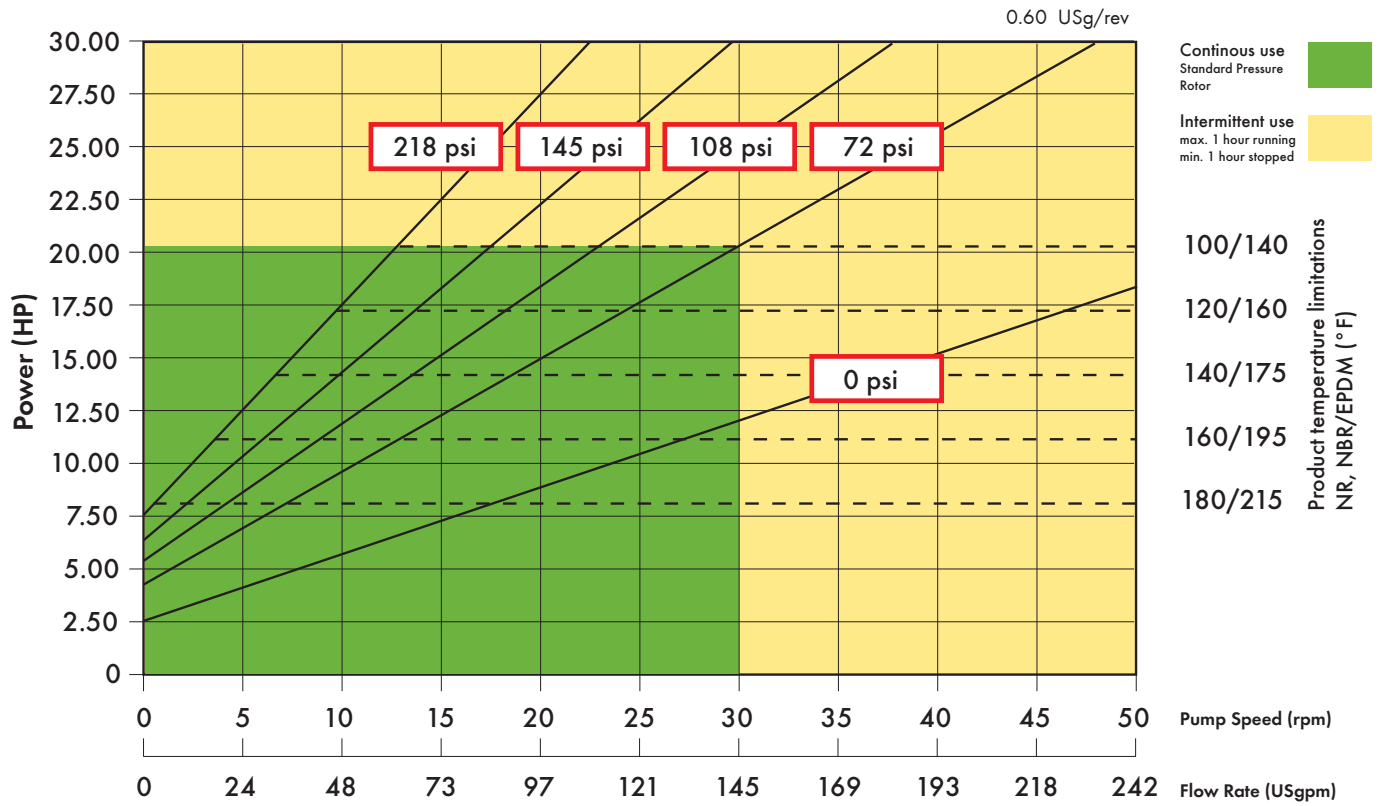
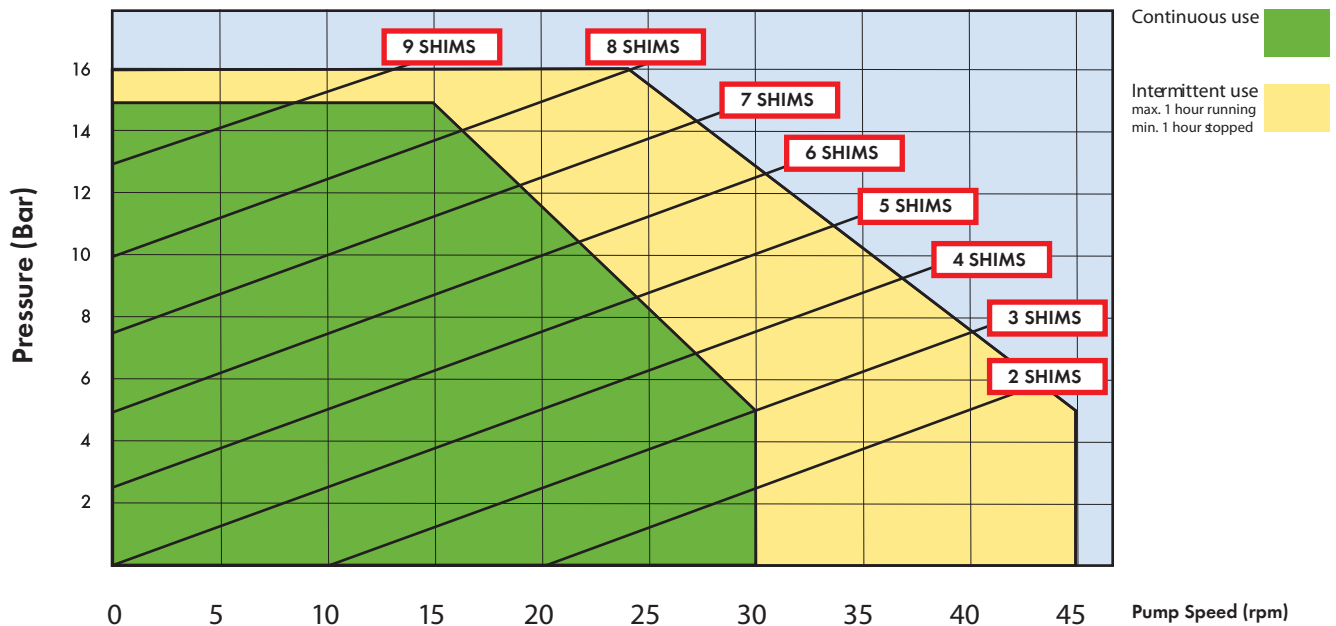


VERDERFLEX VF100 Technical Data Sheet

Performance Curve



Shimming Curve

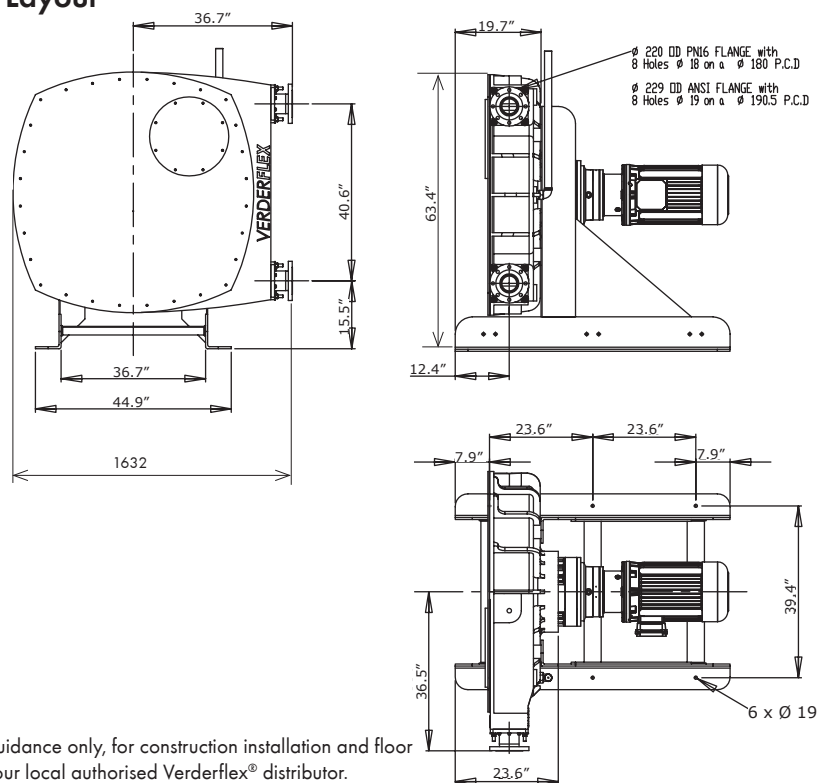


VERDERFLEX VF100

Technical Data Sheet

VERDERFLEX®

General Arrangement Layout



All dimensions are in inches.

All dimensions and weights are for guidance only, for construction installation and floor mounting drawings please contact your local authorised Verderflex® distributor.

Standard Materials of Construction

Description	Material	Weight (lbs)	Paint Detail
Pump Housing	Cast Iron (GG25)	1,984	RAL 6018 (Green)
Front Cover	Mild Steel (BS EN10.025:1993/5275)	251	RAL 7021 (Black)
Rotor	Cast Iron (GG25)	573	
Rotor Shoes	Aluminium (6082T6)	110	
Flanges	Mild Steel (BS EN.10.025 FE430A)	28.6 each	
Inserts	Stainless Steel (316L) Polypropylene P.V.D.F	8.8	
Base Frame	Carbon Steel	419	RAL 7035 (Grey)
Lubricant	Verderlube - Glycerine based compound Verdersil - Silicone oil	16 gallons	
Hose	NR, NBR, Food grade NBR, CSM and EPDM	77	
Close coupled pump unit - "Flat Pack"		4,188	

VERDERFLEX

Unit 3, California Drive, Castleford WF10 5QH United Kingdom
TEL +44 (0)1924 221 020
FAX +44 (0)113 222 0291
MAIL info@verderflex.com
WEB www.verderflex.com

AT Wien **BE** Aartselaar **BG** Sofia **CH** Basel **CN** Shanghai **CZ** Praha **DE** Haan **FR** Eragny s/Oise **GB** Castleford **HU** Budapest **IT** Torre Boldone **JP** Tokyo **NL** Groningen/Vleuten **PL** Katowice **RO** Bucuresti/Sibiu **RU** St Petersburg **SK** Bratislava **US** Newtown/Macon **ZA** Northriding