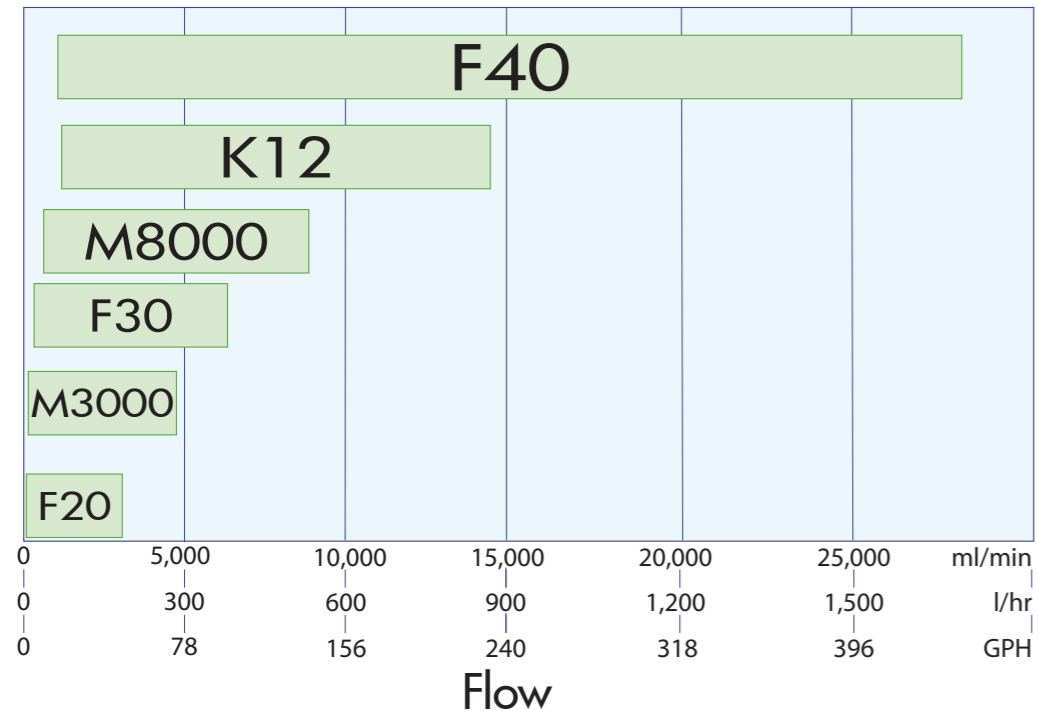


Quick Selection Guide



Tubing and Flow
 VERDER offers a wide range of tube which provides the ideal choice to suit the specific customer. Our range includes various diameters and wall thicknesses. Special tubes are available on request.

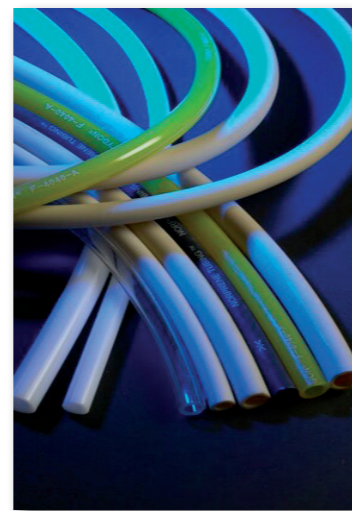
The criteria below are important when selecting a tube:

- Chemical compatibility
- Food grade quality
- Tube life
- Pressure
- Sterilisation capability

The following tube materials are available:

- Verderprene - FDA Food Grade Approval, USP Class VI bio-compatibility, Enhanced Tube Life
- Silicone - High temperature fluids
- Tygon - Aggressive chemicals
- Viton - High Temperature Aggressive chemicals

Please see our tube selection chart on our website at www.verderflex.com



VERDERFLEX[®] INDUSTRIAL

Verderflex[®] Industrial Peristaltic Tube Pumps



The Verderflex[®] Series

Verderflex[®]

- Operating pressures to 16 Bar /230 PSI and flow rates to 90m³/hr / 390 US GPM
- Specially designed hose construction to reduce fatigue.
- Close coupled drive design or long coupled option with bearing housing
- Certified to EHEDG Standards for use in the food & drinks industry
- Supplied with a 2 year warranty covering any defects in workmanship and material under normal use.



Verderflex[®] Dura

- Flows from 3 l/h (0.013 US GPM) to 1,700 l/h (7.5 US GPM)
- Maximum discharge pressures up to 12 bar (174 PSI)
- Longer hose life
- Quick & easy maintenance
- Long coupled pump with close coupled advantages
- 70% smaller footprint*
- Up to 25% reduction in operational noise.



* Compared with comparable products

Verderflex[®] Smart Tube Pump

- Flows from 0.25ml/min (0.004 US GPH) to 27 l/min (428 US GPH)
- Maximum discharge pressures up to 2 bar
- Four sizes of IP 55 digitally controlled programmable multi channel tube pumps
- Wide range of tube materials including Verderprene and Silicone
- Easy-fit self adjusting tube saddle.
- External interfaces : 0-10V, 4-20 mA, RS 232.



Verderflex[®] Scientific

- The Verderflex[®] tube pump range of cased pumps are ideally suited to benchtop pumping applications for the accurate dosing of abrasive, corrosive, shear sensitive and viscous liquids. Providing flow rates from a few ml/min to 1.3 l/min.
- Providing exceptional dosing accuracy
 - With tubes to suit food, chemical and industrial applications
 - Total product containment within leak free, hygienic tubing
 - Quick and reliable tube change
 - IP40 and IP66 enclosure options.



Verderflex Industrial

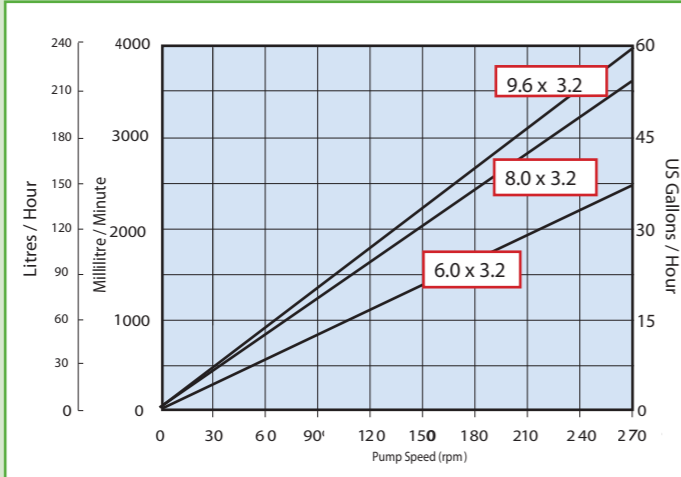
The Verderflex Industrial range of tube pumps provides a balanced selection of simple to operate peristaltic pumps. The family offers the customer pump choices that are compact, can have multiple heads, are simple by design, can have hazardous area ratings and the Smart series provide rapid tube changeovers.

Compact

The range has been developed to offer simple, reliable and cost effective pumping solutions for Industrial applications. Standard designs incorporate rugged Aluminium pump heads with thick wall tube for good suction and IP55 Gearmotors with both single and three phase options. Different ratio gearboxes are available and the standard 'CE' unit can also be supplied to 'UL' or 'CSA'.

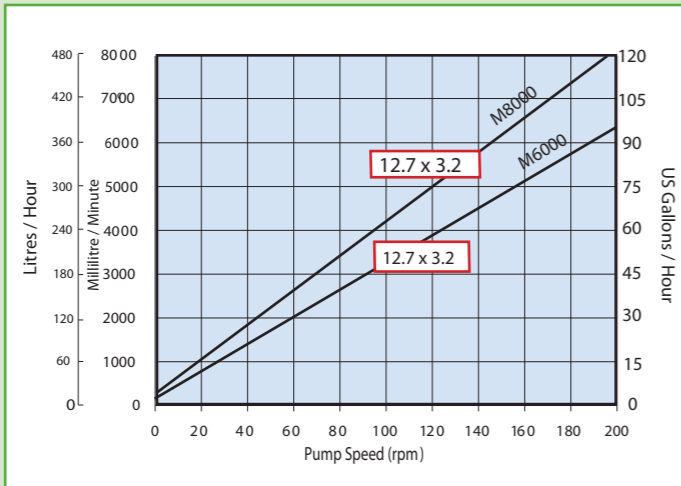
M3000

- Flow: Up to 3,834 ml/min : 230 l/hr: 60 GPH
- Three tube size options: 6.0, 8.0 & 9.6mm ID x 3.2mm Wall
- Anodised aluminium rotor with nylatron rollers



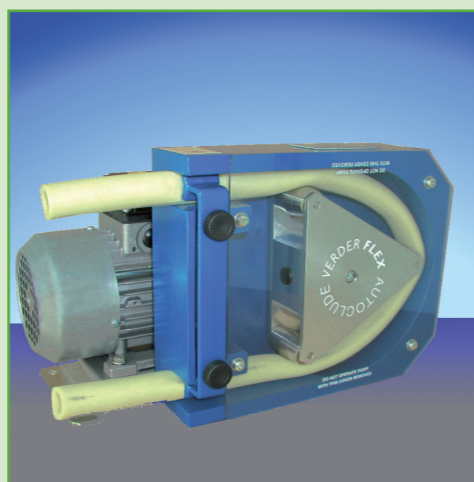
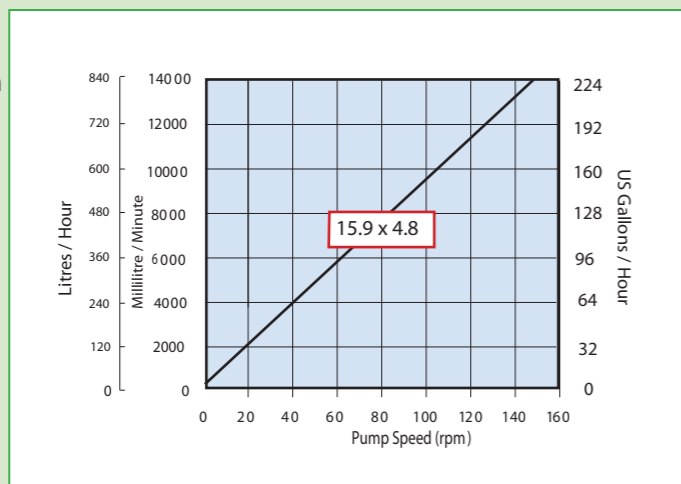
M6000 / M8000

- Flow: Up to 7,831 ml/min : 469 l/hr : 124 GPH
- 12.7mm ID x 3.2mm Wall
- Three roller anodized aluminium rotor



K12

- Flow: Up to 14,000ml/min : 840 l/hr : 220 GPH
- 15.9 mm ID x 4.8 mm Wall
- Three roller rotor with Stainless Steel rollers and ball race bearings



Smart

The Smart F pump range is derived from the Verderflex Smart programmable pump and shares a common head design. Smart F pumps can have multiple heads to replace multiple pumps with a single unit and use the Smart pump head for rapid tube changeovers. The Smart industrial range can be used with external variable speed controllers (VFDs) or inverters for easy integration with SCADA plant control schemes. Standard designs use 50Hz motors but DC powered, UL & CSA approved, 60 Hz versions and hazardous area duty motors are also available.



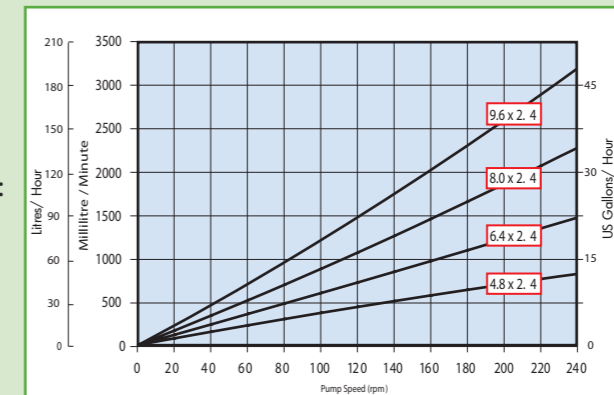
Each Smart pump feature:

- 3 Stainless Steel Rollers and an Aluminium Rotor
- IP55 / NEMA 4 Enclosure

- Option high precision / low pulsation 6 Roller Heads
- Up to 4 heads can be stacked

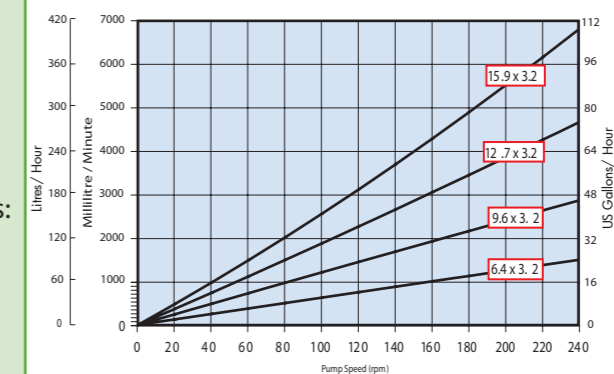
F20

- Flows : Up to 3,150 ml/min : 189 l/hr: 50 GPH
- Four standard tube size options: 4.8, 6.4, 8.0 & 9.6mm ID x 2.4mm Wall
- Special order low flow tube options 1.6 x 1.6 & 3.2 x 1.6mm



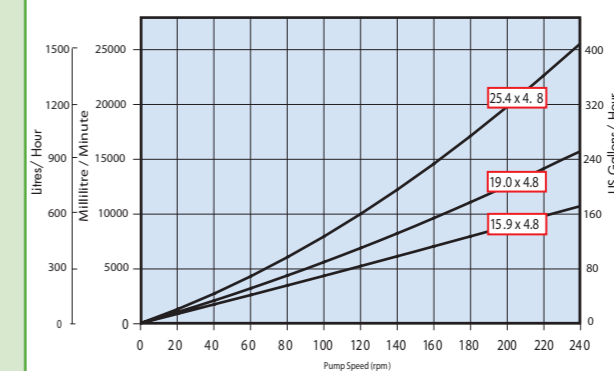
F30

- Flows : Up to 6,900 ml/min : 414 l/hr : 109 GPH
- Four standard tube size options: 6.4, 9.6, 12.7 & 15.9 mm ID x 3.2mm Wall



F40

- Flows : Up to 27,000 ml/min : 1,620 l/hr : 426 GPH
- 3 standard tube size options: 15.9, 19.0 & 25.4mm ID x 4.8mm Wall



Lightning Fast Tube Change

The easy-fit tube saddle is designed for single handed operation and is based on the design of a ski boot fastener, allowing the tube to be loaded quickly and easily from above.



Insert the tube on top of the rollers



Fit the saddle to one set of dowels



Open up the lever and fit the claw over the other set of dowels



Push the lever down to lock the saddle into place

Tube loading in less than 1 min!