

MODEL: M025 d.c.

Combining all the robustness of the new pump head design with a quality d.c. gear motor provides 12/24v d.c. use with flow rates of up to 120ml/min.

Pump head: Polycarbonate/ABS blend cyclopy (blue) with clear-hinged polycarbonate cover

Motor: Permanent Magnet with spur gearbox

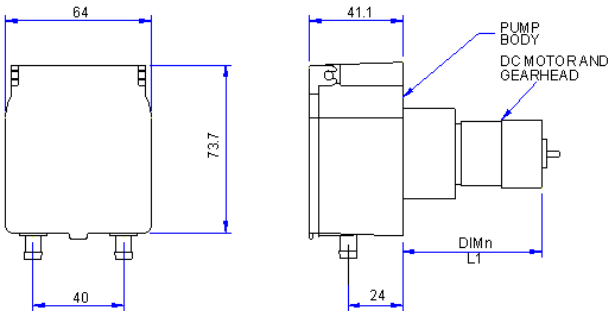
Rotor: 2 or 3 roller design with tube loading feature

Power

Supply: 12/24v d.c. 15W

Tube: Silicone, Autopr, ene, Tygon, Viton
Prothane 1.6, 3.2, 4.0, 4.8mm x 1.6mm wall

Weight: 0.40Kgs



FLOW RATES ml/min	
TUBE	(BASED ON 2 ROLLER ROTOR) 60RPM
1.6mm	15 ml/min
3.2mm	37 ml/min
4.0mm	75 ml/min
4.8mm	120 ml/min

Identify required flow rate in above table and select largest tube size with slowest motor speed to achieve best tube life.

MODEL: M025 d.c. high flow

Combining all the robustness of the new pump head design with a quality high flow d.c. gear motor can deliver up to 260ml/min at 130 rpm.

Pump head: Polycarbonate/ABS blend cyclopy (blue) with clear-hinged polycarbonate cover

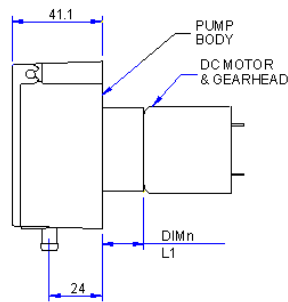
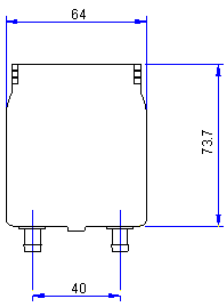
Motor: Permanent magnet with spur gearbox

Rotor: 2 or 3 roller design with tube loading feature

Power Supply: 12/24v d.c. 20W

Tube: Silicone, Autoprene, Tygon & Viton.
1.6, 3.2, 4.0, 4.8mm x 1.6mm wall

Weight: 0.40Kgs



FLOW RATES ml/min	
TUBE	(BASED ON 2 ROLLER ROTOR) 130RPM
1.6mm	32 ml/min
3.2mm	80 ml/min
4.0mm	160 ml/min
4.8mm	260 ml/min

Identify required flow rate in above table and select largest tube size with slowest motor speed to achieve best tube life.